

PHILIPS

MMS 305/A 3.500 Acoustic Surround Power



Multi-channel Soft Flat Panel PC speaker system

Instructions for use
Mode d'emploi
Bedienungsanleitung
Istruzioni per l'uso
Manual del Usuario
Installationsanleitung
Brugsanvisning
Käyttöohje
Zalecenia dla użytkownika
使用説明書
Kullanım Kılavuzu
Руководство по эксплуатации
Instrukcja obsługi
Bruksanvisning





PHILIPS

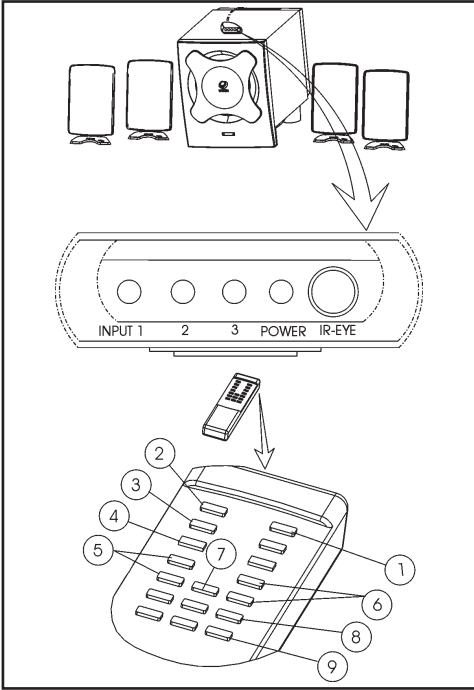
SAFETY INSTRUCTIONS:

For US/Canada only

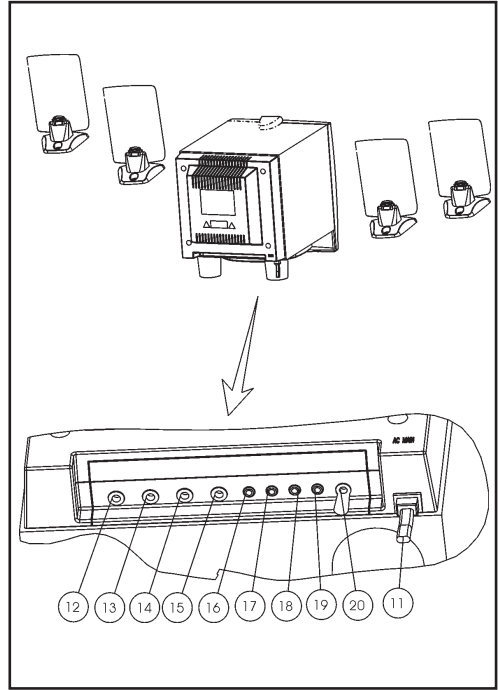
IMPORTANT SAFETY INSTRUCTIONS - Read before operating equipment

This product was designed and manufactured to meet strict quality and safety standards. There are, however, some installation and operation precautions which you should be particularly aware of.

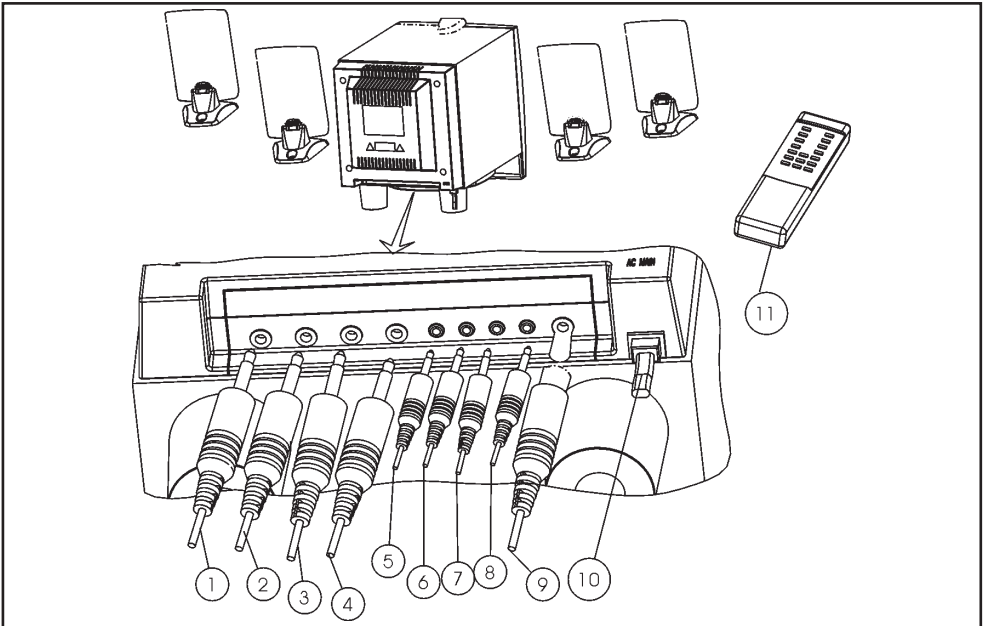
1. Read these instructions - All the safety and operating instructions should be read before the appliance is operated.
 2. Keep these instructions - The safety and operating instructions should be retained for future reference.
 3. Heed all warnings - All warnings on the appliance and in the operating instructions should be adhered to.
 4. Follow all instructions - All operating and use instructions should be followed.
 5. Do not use this apparatus near water - for example, near a bathtub, washbowl, kitchen sink, laundry tub, in a wet basement or near a swimming pool, etc.
 6. Clean only with a damp cloth. The appliance should be cleaned only as recommended by the manufacturer.
 7. Install in accordance with the manufacturers Instructions. Do not block any of the ventilation openings. For example, the appliance should not be situated on a bed, sofa, rug, or similar surface or placed in a built-in installation, such as a bookcase or cabinet that may impede the flow of air through the ventilation openings.
 8. Do not Install near any heat sources such as radiators, heat registers, stoves, or other apparatus (including amplifiers) that produce heat.
 9. Do not defeat the safety purpose of the polarized or grounding-type plug. A polarized plug has two blades with one wider than the other. Match wide blade of Plug to wide slot, fully insert. A grounding type plug has two blades and a third grounding prong. The wide blade or the third prong are provided for your safety. When the provided plug does not fit into your outlet, consult an electrician for replacement of the obsolete outlet.
- 
10. Protect the power cord from being walked on or pinched particularly at plugs, convenience receptacles, and the point where they exit from the apparatus.
 11. Only use attachments/accessories specified by the manufacturer.
 12.  Use only with a cart, stand, tripod, bracket, or table specified by the manufacturer, or sold with the apparatus. When a cart is used, use caution when moving the cart/apparatus combination to avoid injury from tip-over.
 13. Unplug this apparatus during lightning storms or when unused for long periods of time.
 14. Refer all servicing to qualified service personnel. Servicing is required when the apparatus has been damaged in any way, such as power-supply cord or plug is damaged, liquid has been spilled or objects have fallen into the apparatus, the apparatus has been exposed to rain or moisture, does not operate normally, or has been dropped.
 15. Warning! To reduce the risk of fire or electric shock, do not expose this appliance to rain or moisture.



Explanation



Explanation



Installation

Important notes for users in the U.K.

Mains plug

This apparatus is fitted with an approved 13 Amp plug.

To change a fuse in this type of plug proceed as follows:

- 1 Remove fuse cover and fuse.
- 2 Fix new fuse which should be a BS1362 5 Amp, A.S.T.A. or BSI approved type.
- 3 Refit the fuse cover.

If the fitted plug is not suitable for your socket outlets, it should be cut off and an appropriate plug fitted in its place. If the mains plug contains a fuse, this should have a value of 5 Amp. If a plug without a fuse is used, the fuse at the distribution board should not be greater than 5 Amp.

Note: The severed plug must be disposed of to avoid a possible shock hazard should it be inserted into a 13 Amp socket elsewhere.

How to connect a plug

The wires in the mains lead are coloured with the following code: blue = neutral (N), brown = live (L). As these colours may not correspond with the colour markings identifying the terminals in your plug, proceed as follows:

- Connect the blue wire to the terminal marked N or coloured black.
- Connect the brown wire to the terminal marked L or coloured red.
- Do not connect either wire to the earth terminal in the plug, marked E (or \perp) or coloured green (or green and yellow).

Before replacing the plug cover, make certain that the cord grip is clamped over the sheath of the lead - not simply over the two wires.

Copyright in the U.K.

Recording and playback of material may require consent. See Copyright Act 1956 and The Performer's Protection Acts 1958 to 1972.

Norge

Typeskilt finnes på apparatens underside.

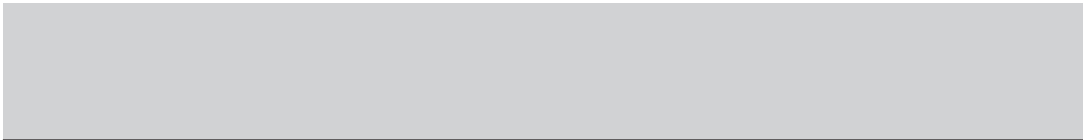
Observer: Nettbryteren er sekundert innkopleet. Den innebygde nettdelen er derfor ikke frakopleet nettet så lenge apparatet er tilsluttet nettkontakten.

For å redusere faren for brann eller elektrisk støt, skal apparatet ikke utsettes for regn eller fuktighet.

Deutschland

Hiermit wird bescheinigt, daß dieses Gerät in Übereinstimmung mit den Bestimmungen der Amtsblattverfügung 1046/1984 funktentstört ist.

Der Deutschen Bundespost wurde das Inverkehrbringen dieses Gerätes angezeigt und die Berechtigung zur Überprüfung der Serie auf Einhaltung der Bestimmungen eingeräumt.



English6	English
French10	French
German14	German
Italian18	Italian
Spanish22	Spanish
Dutch26	Dutch
Swedish30	Swedish
Finish34	Finish
Polish38	Polish
Chinese42	Chinese
Turkish46	Turkish
Russian50	Russian
Norwegian54	Norwegian
Danish58	Danish

Description

English

Ultra-thin design, powerful surround audio!

The **A 3.500 Acoustic Surround Power / MMS 305** is the result of the ultimate union of Philips acoustical core competencies. We created a multimedia multi-channel speaker system that features four ultra-thin soft flat panel speakers, a variety of mounting options and an explosive wOOx™ subwoofer. The set is the perfect choice for a space-saving hifi audio solution.

This Soft Flat Panel speaker system is especially designed as a multimedia hifi multi-channel speaker system. It will enhance dramatically your gaming and audio-visual experience. It delivers the ultimate sound solution for gamers by providing thrilling surround sound.

All together, there can be connected up to three audio-visual sources at the same time directly to the speaker system: one 4-channel input (INPUT 1) for your 4-channel soundcard and two stereo inputs for other audio-visual devices (INPUT 2, INPUT 3).

For optimum performance, the set is best used with 3D positional audio inputs, from e.g. 4-channel soundcards. The soundcard outputs for 3D positional audio outputs are usually marked as OUT 1 and OUT 2. The information provided from these OUT 1 and OUT 2 computer outputs will activate the four satellites and the subwoofer so that you will experience sound from all around you.

If your computer is only equipped with a stereo soundcard, or you're using other stereo audio-visual sources as input, then the speaker system will operate as a stereo speaker system. The front and surround satellites on one side will be one stereo channel and the front and surround satellites on the other side will be the other stereo channel.

Next to your computer, this multi-functional **A 3.500 Acoustic Surround Power / MMS 305** system can be connected to your CD/MP3 player and games consoles as well. It is also possible to drive the speaker system from a DVD player that has two analog outputs.

Ultra thin, stylish design, superb acoustic quality and high impact bass power from all around you. Flat will –from now onwards - never sound flat anymore, at least Philips soft flat panel speakers!

Philips Advanced Technologies

wOOx™



Anchored by a 40 watt subwoofer, the **A 3.500 Acoustic Surround Power / MMS 305** system employs Philips' patented wOOx™ Bass Driver technology to generate superior bass from a deceptively small enclosure. The wOOx™ bass drivers are composed of a unique dual suspension design mounted in front of the subwoofer resulting in a deeper, richer bass performance you would expect from a large subwoofer. With the symmetrical construction of the wOOx™ Bass Radiator, there is complete balance of the membrane movement producing no discernable distortion. As a result, gaming effects are more intense and music more enjoyable.

Soft Flat Panel Satellite Speakers



NXT* has developed a unique loudspeaker technology that has redefined the shape of sound. Philips has taken a new step in optimising the implementation of NXT*'s technology by adding a High Frequency Booster. The High Frequency Booster boosts sound pressure at the higher frequencies, thereby enabling the use of a soft panel material whose sound quality matches the performance of most home audio systems.

* NXT Trade Mark of New Transducers Ltd.



Trade Mark of New Transducers Ltd.
All Patent Rights Reserved.

Explanation (Illustration page 3)

English

- ① **STANDBY**
To switch the speaker system into ON or OFF (=STANDBY) mode
 - ② **MUTE**
To switch the speaker system into mute mode, and normal mode again
 - ③ **MASTER VOLUME - / +**
To adjust the master volume higher or lower
 - ④ **FADE REAR / FRONT**
To adjust the loudness of the rear and the front satellite speakers
 - ⑤ **BASS - / +**
To adjust the bass level according your personal preference
 - ⑥ **TREBLE - / +**
To adjust the presence of the higher tones according your personal preference
 - ⑦ **wOOx™**
To activate wOOx™, hear a full spectrum of bass frequencies – ranging from the subtle to the extreme
 - ⑧ **GAME/ SPEECH/ MUSIC**
Choose from either the game, speech or music button for optimal pre-set sound reproduction per genre
 - ⑨ **INPUT 1/ INPUT 2/ INPUT 3**
Make your choice of audio-visual source selection. Two separate stereo input sources and one 4-channel input source can be connected to this multi-channel speaker system
 - ⑩ **POWER**
This mains power cord must be connected to the AC outlet
 - ⑪ **INPUT 1 LINE (GREEN COLOR)**
To connect the Line In cable - for the front satellite speakers - from Out 1 at the soundcard/ sound source
 - ⑫ **INPUT 1 SURR (BLACK COLOR)**
To connect the Surround In cable - for the surround satellite speakers - from Out 2 at the soundcard/ sound source
 - ⑬ **INPUT 2 STEREO**
Option to connect a stereo soundcard or another stereo audio-visual sound source
 - ⑭ **INPUT 3 STEREO**
Option to connect a stereo soundcard or another stereo audio-visual sound source
 - ⑮ **SATELLITE FR.L**
To connect the front left satellite speaker
 - ⑯ **SATELLITE FR.R**
To connect the front right satellite speaker
 - ⑰ **SATELLITE SR.L**
To connect the surround left satellite speaker
 - ⑱ **SATELLITE SR.R**
To connect the surround right satellite speaker
 - ⑲ **REMOTE IR-EYE**
To connect the remote control IR-EYE
- WALL MOUNTING OPTION**
The design of the satellites speakers offers wall mounting as an option

Installation (Illustration page 3)

English

- ① Connect the LINE IN cable (green color) from OUT 1 at the soundcard to INPUT 1 LINE , **AND**
- ② Connect the SURROUND IN cable (black color) from OUT 2 at the soundcard to INPUT 1 SURR (only applicable if a 4-channel soundcard is available), **AND/OR**
- ③ Connect another LINE IN cable from another stereo audio-visual source to INPUT 2 STEREO, **AND/OR**
- ④ Connect another LINE IN cable from another stereo audio-visual source to INPUT 3 STEREO
- ⑤ Connect the front left satellite speaker to SATELLITE FR.L
- ⑥ Connect the front right satellite speaker to SATELLITE FR.R
- ⑦ Connect the surround left satellite speaker to SATELLITE SR.L
- ⑧ Connect the surround right satellite speaker to SATELLITE SR.R
- ⑨ Connect the Remote Control IR-EYE connector to the REMOTE IR-EYE and place the eye on top of your monitor/ desktop PC
- ⑩ Connect the fixed mains power cord to the AC outlet
- ⑪ Switch on (and switch off as well) the system using the STANDBY button on the remote control
- ⑫ Tune the system using the controls on the soundcard/ sound source and the controls on the remote control

NOTE: Do not insert the power plug into the AC outlet until all connections are made!

Safety

- Do not expose the speakers to excessive heat (caused by heating equipment or direct sunlight). To reduce the risk of fire or electric shock, do not expose this appliance to rain or moisture. If fluid spills into the speakers, disconnect any connections immediately and let the speakers dry before reusing them.
- You may clean the speakers with a soft, slightly dampened lint-free cloth. Do not use any cleaning agents as they may have a corrosive effect.
- If the speakers do not operate, disconnect them from the power supply. Wait a few seconds before reconnecting them to the power supply.

Specifications

Overall

- output power : 80 watts RMS
- THD : 10% @ 80 watts RMS
- frequency response : 40 – 20,000 Hz
- cross-over frequency : 200 Hz
- magnetically compensated

Pre-amplifier

- input resistance : 100K ohms
- input impedance : >10K ohms
- clipping level : 2V RMS
- distortion : 0.05%
- digital volume : 50 steps @ 1.25dB per step
- bass : 8± 2dB per step
- treble : 8± 2dB per step

Satellites

- drivers : 8 ohms Soft Flat 3.25"x5.0"
- output power : 4 x 10 watts RMS @ 10% THD
: 4 x 8 watts RMS @ 0.5% THD
: 4 x 1 watts RMS @ 0.05% THD
- frequency response : 200 – 20,000 Hz

Subwoofer

- drivers : 5.25" super woofer + 6" wOOx
- output power : 2 x 20 watts RMS @ 10% THD
: 2 x 15 watts RMS @ 0.5% THD
: 2 x 1 watts RMS @ 0.05% THD
- frequency response : 40 – 200 Hz

Remote Control

- # of functions : 17 key buttons

Dimensions

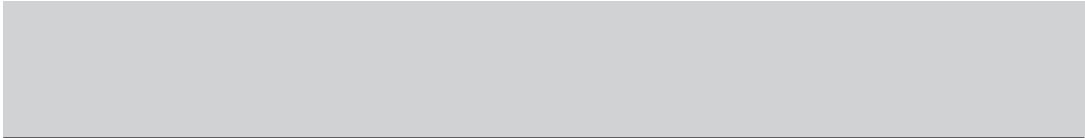
- satellites : 158 (H) x 82 (W) x 81 (D) mm
- subwoofer : 228 (H) x 190 (W) x 266 (D) mm
- remote control : 168 (L) x 38 (W) x 17 (D) mm
- packaging : 284 (H) x 232 (W) x 384 (D) mm

Weight

- satellites : 4 x 0.23 kg
- subwoofer : 3.7 kg

System Requirements

- preferred : 4-channel soundcard
- other possibilities : stereo soundcard, MP3/ CD/
Cassette player, game
consoles



English

French

German

Italian

Spanish

Dutch

Swedish

Finish

Polish

Chinese

Turkish

Russian

Norwegian

Danish

PHILIPS CONSUMER ELECTRONICS COMPANY

A Division of Philips Electronics North America Corporation
Knoxville, Tennessee 37914-1810, U.S.A.

